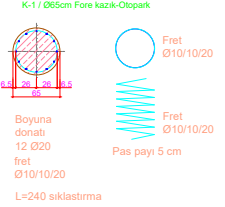
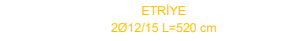
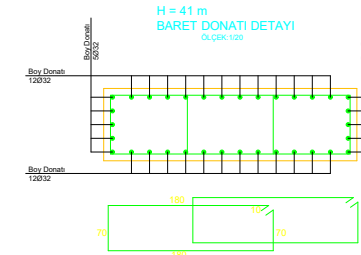
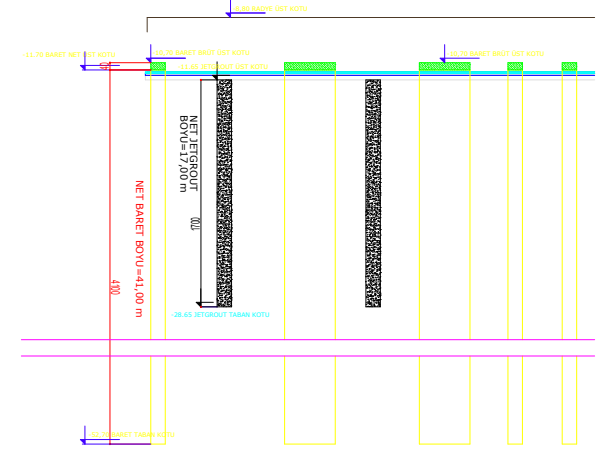
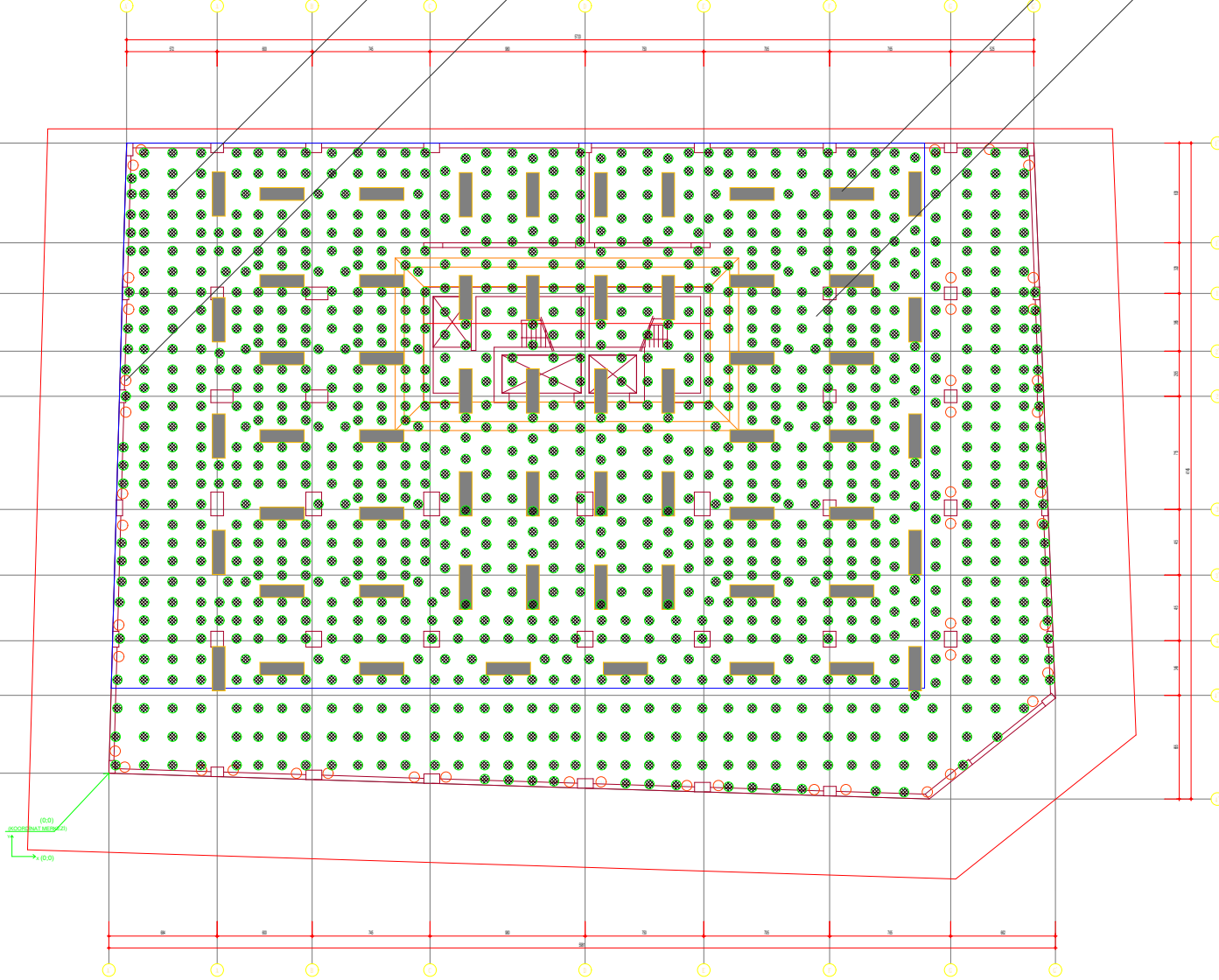


Jet Grout (Çap 60cm) 1097 Adet
Temel Altı Yükseklik (17m)

Fore Kazık (Çap 60cm) 46 Adet
Temel Altı Yükseklik (17-20m) C45 Beton

Baret (Çap 80cm x 280cm) 61 Adet
Temel Altı Yükseklik (41m) C45 Beton

Temel Yüksekliği (2.40m)



65 CM ÇAPLI (L=17.0 m) FORE KAZIK DONATI DETAYI:Ö:1/10